



PERMAJET THE INKJET PAPER SPECIALISTS - PROUD SPONSORS OF THE PAGB e-news

e-news

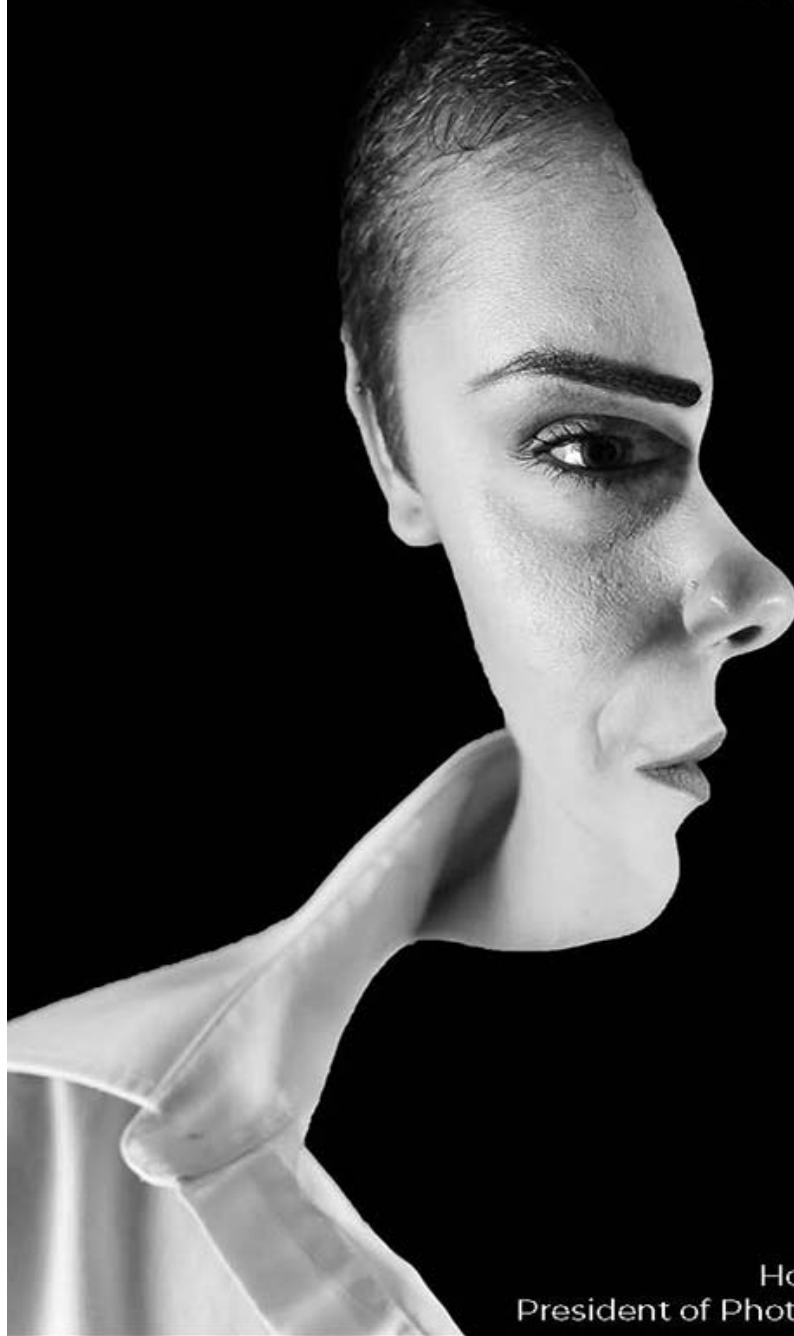
from the Photographic Alliance of Great Britain

Issue 233 extra. 04 July 2019

INTER-FEDERATION PRINT EXHIBITION 2019

JULY 14TH - 31ST

The Old Schoolhouse
Churchbride
Oldbury
B69 2AS



Doors open - 12 noon
Official Opening
Sunday July 14th @ 2pm
Howard Tate MA(Phot) ARPS AFIAP
President of Photographic Alliance of Great Britain

Open Thursday evenings 7pm
for other opening times ring
0121 427 4224

Hon Editor: Rod Wheelans MPAGB MFIAP FIPF HonPAGB HonSPF. rod@creative-camera.co.uk

Opinions expressed in e-news are not necessarily the opinions of The Photographic Alliance of Great Britain and neither the Editor nor the PAGB accepts any liability for any content. Any mention of products or services in e-news does not constitute an endorsement or approval of those items



Silver Medal Award. "Simply Red" by Martin Horton, WCPF

COMPETITIONS: The Inter-Federation Competition is held each June. Federations submit entries from the members of their affiliated Clubs in four Categories – Monochrome Prints, Colour Prints, Open Projected and Nature Projected. Trophies are awarded to the winning Federations. PAGB medals and ribbons are awarded to individual images in each Category.

Individual scores are made available to the Entrant Federations through the Competition Entry System

SONY Sponsor the Inter-Federation Competition

JOINT COLOUR PRINT CHAMPIONS

The Lancashire and Cheshire Photographic Union The North and East Midlands Photographic Federation



Gold Medal Award "Till Death Do Us Part" by Hilary Roberts, MCPF

Inter-Fed Colour Print Competition 2019

Sum of top 15 scores.

Position	Federation	Total Mark	Average
1st	LCPU - The Lancashire and Cheshire Photographic Union	213.00	14.200
=	NEMPF - The North and East Midlands Photographic Federation	213.00	14.200
3rd	MCPF - The Midland Counties Photographic Federation	209.00	13.933
4th	YPU - Yorkshire Photographic Union	204.00	13.600
5th	SPA - Surrey Photographic Association	202.00	13.467
=	EAF - The East Anglian Federation of Photographic Societies	202.00	13.467
7th	NIPA - Northern Ireland Photographic Association	201.00	13.400
8th	SCPF - Southern Counties Photographic Federation	200.00	13.333
9th	SPF - Scottish Photographic Federation	197.00	13.133
=	WCPF - Western Counties Photographic Federation	197.00	13.133
11th	KCPA - The Kent County Photographic Association	195.00	13.000
12th	NCPF - The Northern Counties Photographic Federation	194.00	12.933
13th	CACC - The Chilterns Association of Camera Clubs	193.00	12.867
=	WPF - Welsh Photographic Federation	193.00	12.867
15th	NWPA - North Wales Photographic Association	191.00	12.733



Ribbon_Aggressive Bats by Wendy Collens, SCPF



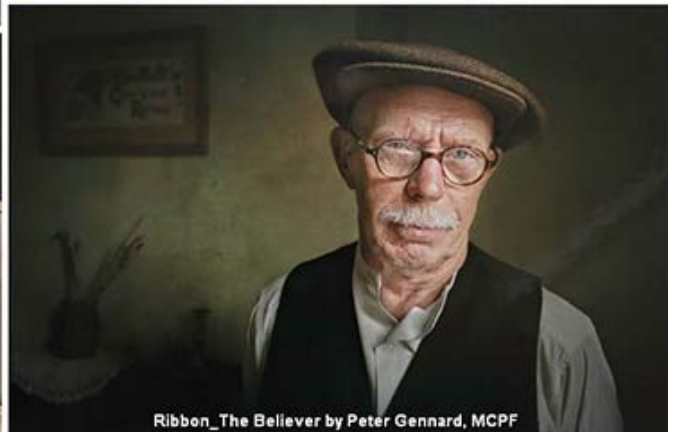
Ribbon_Dipper With Nesting Material by Philip Barber, L&CPU



Ribbon_Glanville Fritillaries On Orchid by Neil Humphries, N&EMPF



Ribbon_The Roca Gallery Bathrooms by Miles Hand, YPU



Ribbon_The Believer by Peter Gennard, MCPF



Silver_Coyote, The Snow Man by Tracey Lund, YPU



Silver_Embrace by Adrian Lines, L&CPU

You can view these pictures, and the results, on the PAGB Website at - <http://www.thepagb.org.uk/competitions/inter-federation-competitions/>
Individual scores are made available to the Entrant Federations through the Competition Entry System

MONOCHROME PRINT CHAMPIONS

The Midland Counties Photographic Federation

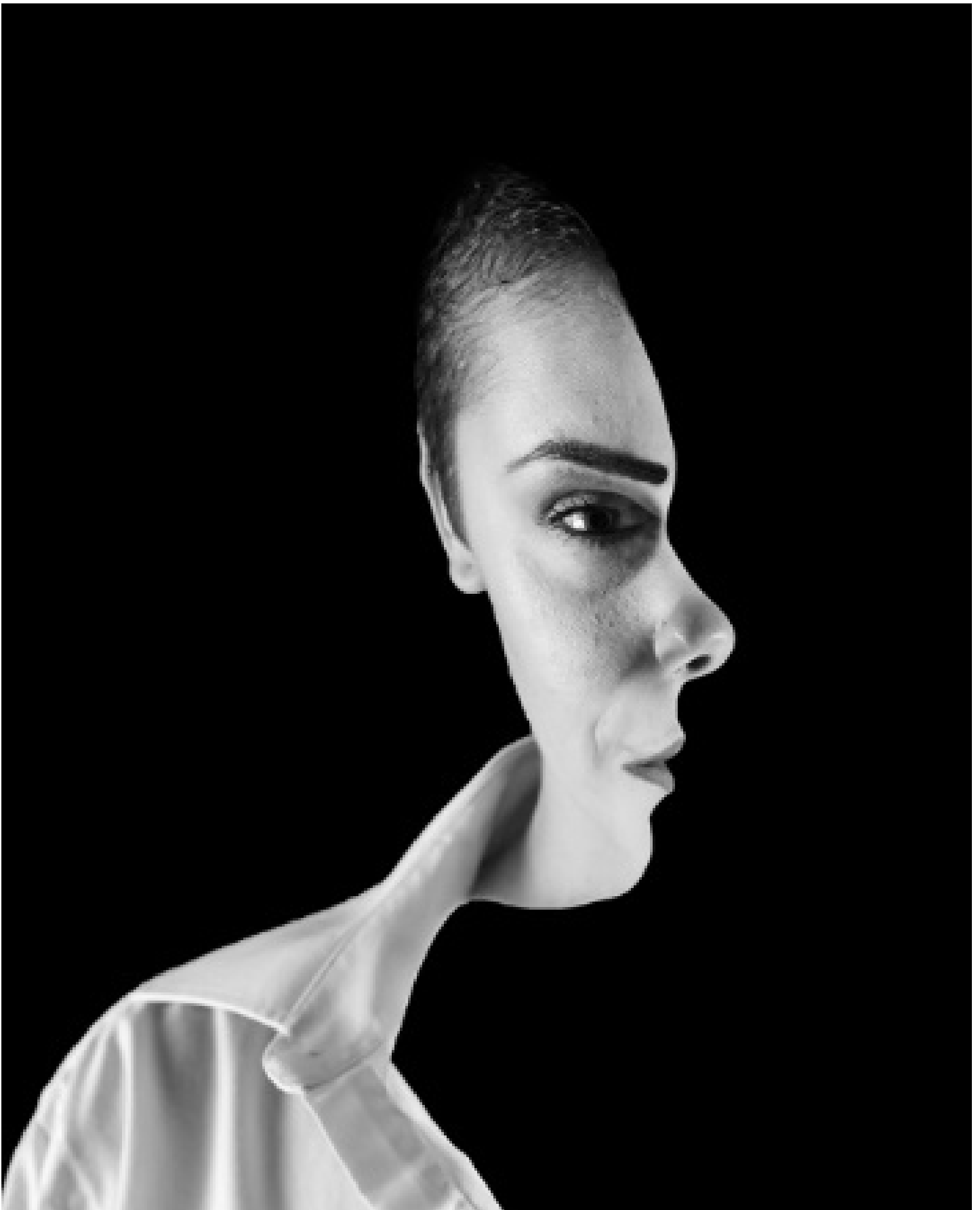


Ribbon Award "Life in a Fish Bowl" by Paul Hassell, MCPF

Inter-Fed Open Mono Print Competition 2019

Sum of top 15 scores.

Position	Federation	Total Mark	Average
1st	MCPF - The Midland Counties Photographic Federation	203.00	13.533
2nd	NEMPF - The North and East Midlands Photographic Federation	198.00	13.200
3rd	NIPA - Northern Ireland Photographic Association	196.00	13.067
=	LGPU - The Lancashire and Cheshire Photographic Union	196.00	13.067
5th	SPF - Scottish Photographic Federation	186.00	12.400
=	EAF - The East Anglian Federation of Photographic Societies	186.00	12.400
7th	KCPA - The Kent County Photographic Association	185.00	12.333
=	SCPF - Southern Counties Photographic Federation	185.00	12.333
=	WPF - Welsh Photographic Federation	185.00	12.333
10th	WCPF - Western Counties Photographic Federation	184.00	12.267
=	YPU - Yorkshire Photographic Union	184.00	12.267
12th	SPA - Surrey Photographic Association	183.00	12.200
=	NCPF - The Northern Counties Photographic Federation	183.00	12.200
14th	CACC - The Chilterns Association of Camera Clubs	181.00	12.067
15th	NWPA - North Wales Photographic Association	180.00	12.000



Gold Medal Award. "Mystique" by Ian Smith, KCPA

e-news IS SPONSORED BY **PermaJet**





Ribbon_Outside School by Bob Moore, MCPF



Ribbon_Sommers Leap by Bob Given, NIPA



Ribbon_What About My Walk by John Thorndike, N&EMPF



Ribbon_The Computer Scientist by Zoltan Balogh, SCPF



Silver_Don't Make Me Cry by Laurie Campbell, NIPA



Ribbon_Twenties Elegance by Carol McNiven Young, N&EMPF



Silver_Maro Itoje about to Score by Graham Johnston, SPA



Silver_Pancake Tutu by Ross McKelvey, NIPA

SONY

Sponsor the Inter-Federation Competition

OPEN PROJECTED DIGITAL IMAGE CHAMPION

The Lancashire and Cheshire Photographic Union



Gold Medal Award "Page Three" by Lynda Harvey, L&CPU

Inter-Fed Open PDI Competition 2019

Sum of top 15 scores.

Position	Federation	Total Mark	Average
1st	LCPU - The Lancashire and Cheshire Photographic Union	215.00	14.333
2nd	MCPF - The Midland Counties Photographic Federation	209.00	13.933
3rd	WCPF - Western Counties Photographic Federation	207.00	13.800
=	NEMPF - The North and East Midlands Photographic Federation	207.00	13.800
5th	EAF - The East Anglian Federation of Photographic Societies	201.00	13.400
6th	KCPA - The Kent County Photographic Association	197.00	13.133
7th	NIPA - Northern Ireland Photographic Association	196.00	13.067
=	SPA - Surrey Photographic Association	196.00	13.067
9th	SCPF - Southern Counties Photographic Federation	194.00	12.933
=	YPU - Yorkshire Photographic Union	194.00	12.933
11th	NCPF - The Northern Counties Photographic Federation	191.00	12.733
12th	CACC - The Chilterns Association of Camera Clubs	190.00	12.667
13th	SPF - Scottish Photographic Federation	189.00	12.600
=	WPF - Welsh Photographic Federation	189.00	12.600
15th	NWPA - North Wales Photographic Association	184.00	12.267



Silver_On Her Shoulder by Roger Evans, MCPF



Silver_Fashion Accessories by Pauline Pentony, NCPF



Silver_A Long Exposure by Dave Armstrong, L&CPU



Ribbon_Another Place by Martin Horton, WCPF



Ribbon_They're Behind You by George Reekie, WCPF



Ribbon_James Phillip on Floor by Robert Millin, L&CPU



Ribbon_Standing Out by George Hodgson, NCPF



Ribbon_The Lowry Family by Barry Thompson, WCPF



Ribbon_Watchful Referee by Robert Millin, L&CPU



Nature PDI
Silver Medal

"Jackdaws"
by
Sandra
McNeil,
SPF

NATURE PROJECTED DIGITAL IMAGE CHAMPION

The Lancashire and Cheshire Photographic Union



Inter-Fed Nature PDI Competition 2019

Sum of top 15 scores.

Position	Federation	Total Mark	Average
1st	LCPU - The Lancashire and Cheshire Photographic Union	217.00	14.467
2nd	WCPF - Western Counties Photographic Federation	209.00	13.933
3rd	SCPF - Southern Counties Photographic Federation	208.00	13.867
=	MCPF - The Midland Counties Photographic Federation	208.00	13.867
=	NEMPF - The North and East Midlands Photographic Federation	208.00	13.867
6th	EAF - The East Anglian Federation of Photographic Societies	207.00	13.800
7th	SPA - Surrey Photographic Association	203.00	13.533
=	SPF - Scottish Photographic Federation	203.00	13.533
9th	CACC - The Chilterns Association of Camera Clubs	198.00	13.200
10th	WPF - Welsh Photographic Federation	196.00	13.067
11th	NIPA - Northern Ireland Photographic Association	194.00	12.933
=	YPU - Yorkshire Photographic Union	194.00	12.933
13th	KCPA - The Kent County Photographic Association	193.00	12.867
14th	NCPF - The Northern Counties Photographic Federation	192.00	12.800
15th	NWPA - North Wales Photographic Association	189.00	12.600



www.thepagb.org.uk/



Ribbon_BeeWolf Wasp Carrying Honeybee by Simon Jenkins, EAF



Ribbon_Arctic Fox Winter Coat by Ben Garrick, SPA



Ribbon_Deilephila elenor by Ross Laney, SCPF



Ribbon_Dalmatian Pelican Defending Territory by Sheila Tester, SCPF



Ribbon_Red Grouse Calling by John Coe, MCPF



Ribbon_Green Turtle Bunaken Island by David Keep, N&EMPF

Claim up to £200 Sony cashback until 1 September at

https://www.sony.co.uk/cashback/summer?cpint=HOMEPAGE_LATESTNEWS_CASHBACKSUMMER2019_4192

Claim up to £200 cashback

Cashback promotion on selected Interchangeable Lens Cameras, Compact Cameras, Camcorders, Lenses and Accessories

Promotion runs from 1st May 2019 to 1st September 2019.
ATTENTION: You can only submit your claim after thirty (30) days from the purchase date

[Claim cashback](#)

[See the status of your claim](#)





Photographers' Insurance with Darwin Clayton

PAGB approved brokers

Darwin Clayton has been the Photographic Alliance of Great Britain's (PAGB) approved broker for over 6 years which has enabled us to negotiate bespoke cover for PAGB members.

Our PAGB Scheme Covers:

Public Liability

Public Liability provides cover for accidental damage or injury to third parties caused by negligence of your club. Limit of Indemnity is £5m as standard, with higher limits available on request.

Club 'All Risks'

Covers equipment owned by or loaned to the club, whilst in UK, also in Europe or worldwide for up to 45 days in any one year.

Members 'All Risks'

Covers the personal photographic equipment of club members whilst in UK, also in Europe or worldwide for up to 30 days in any one year.

Get in touch with the team on
0115 951 7041 or email pagb@dcuk.co.uk